



COST Activites at DWD

Martin Lange, DWD





- Monitoring tool for Snow
 - Recover data sources which are not used so far.
 - Recover changes in data coverage or type of reporting
 - be aware of requirements on software adaptation
 - become active to remove issues (missing data, erroneous data)



- Revision of snow DA method
 - Build up OI analysis, to use obs errors for weighting
 - Include analysis of obs used or denied in the analysis to allow better monitoring of snow analysis
 - Revision of snow analysis in future (planning stage)



No more reports below 2 cm from automated stations



- Use of satellite data
 - Action item in COSMO consortium to include MSG snow mask, basically get benefit from developments at MCH
 - Positive impact on NWP system
- Use of extended snow depth database
 - Benefit from activities of Cost members who contribute also to GCW
- All of these aspects have positive impact on NWP system



Monitoring of snow depth reporting (just setup)

Snow observation monitoring

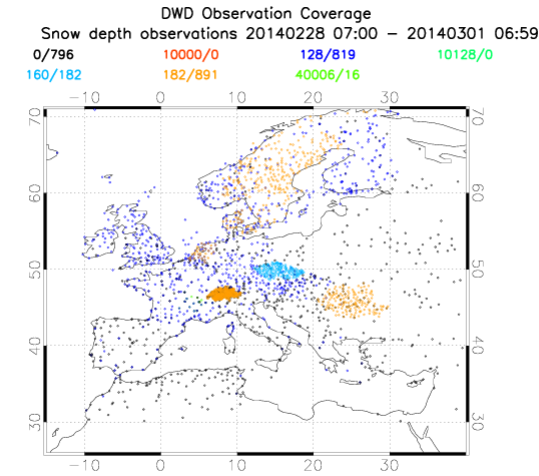
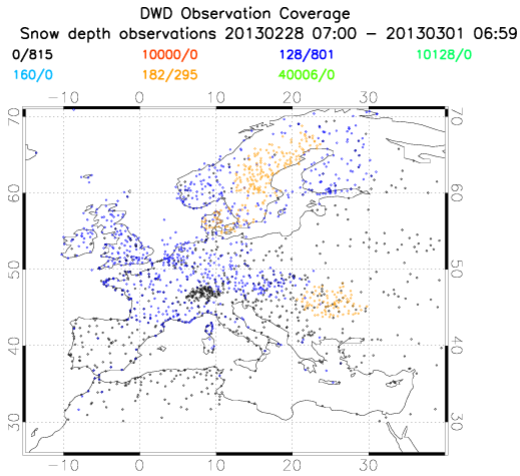
Observation cover, obs types, annual cycle

Snow depth daily monitoring

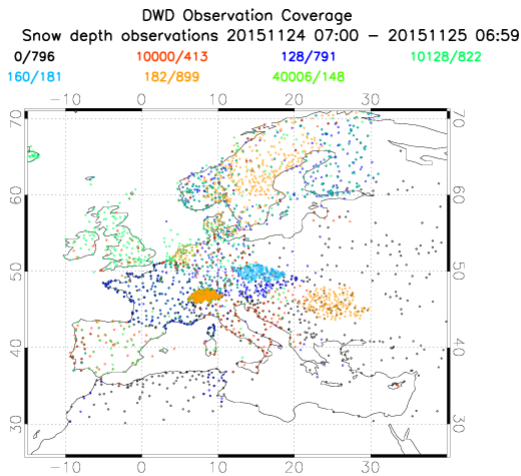
Snow depth details, Station lists



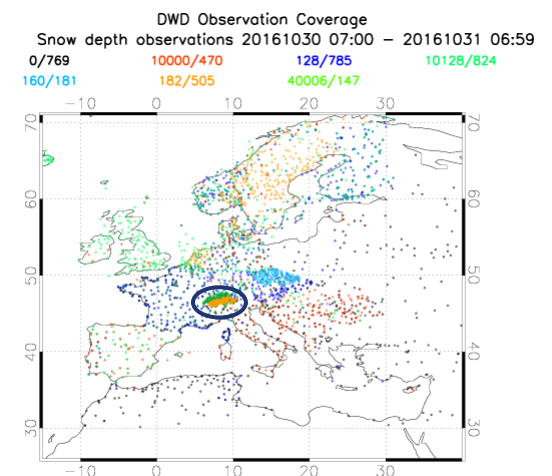
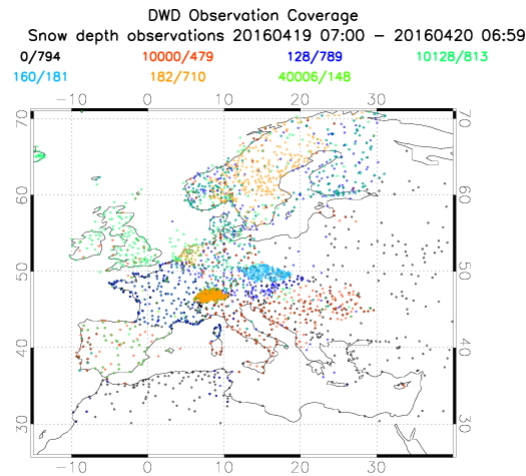
Big improvement in snow data acquisition



additional obs for Suisse, Sweden, Czech., Romania



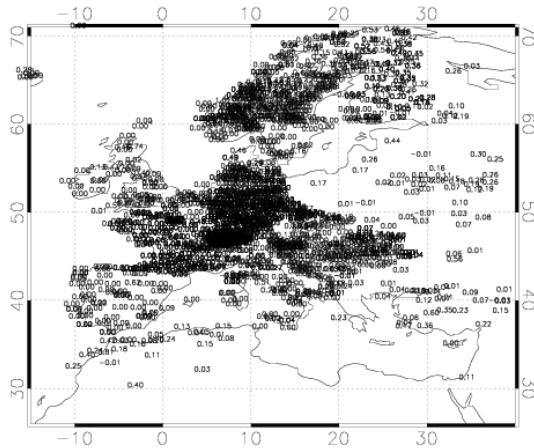
switch to new bufr format in several countries



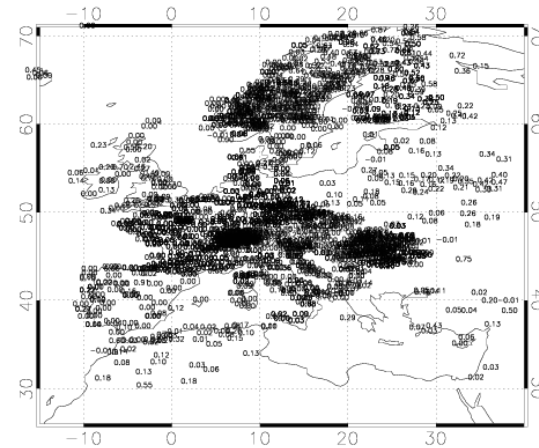
numerous reports in TAC format still
Less reports from suisse (?)



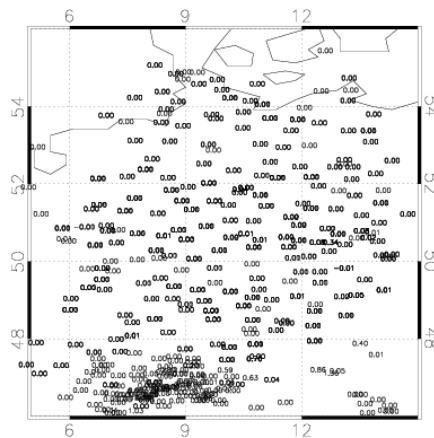
DWD Observation Coverage
Snow depth observations 20161231 04:00–06:59
Valid observations only



DWD Observation Coverage
Snow depth observations 20170205 04:00–06:59
Valid observations only



DWD Observation Coverage
Snow depth observations 20161231 04:00–06:59
Valid observations only



DWD Observation Coverage
Snow depth observations 20170205 04:00–06:59
Stations with missing value at 2017020500

