



COST MEETING + WG MEETING + FIELD CAMPAIGN IN ICELAND
FEB 28, MARCH 1, MARCH 2?
KELDNAHOLT, 112 REYKJAVIK

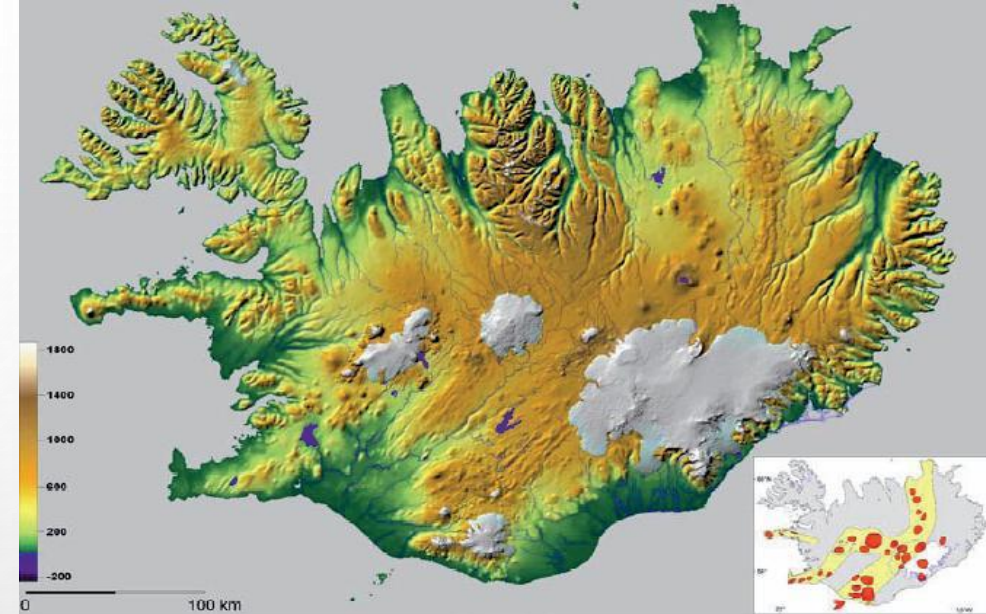
PAVLA DAGSSON WALDHAUSEROVA, OUTI MEINANDER (FMI), DAVID FINGER
(RU) AND MARIA GRITSEVICH (FGI)
(HARPA GRIMSDOTTIR-AVALANCHE CENTER, SIGURDUR ÞORSTEINSSON -IMO)

FIELD TRIP = 1 DAY WEATHER DEPENDED

- GLACIER TRIP- SOLHEIMARJOKULL, 2 – 2.5 HOURS DRIVE
 - **IMPURITIES ON SNOW/ICE**
 - BC AND DUST POLLUTED SNOW HORIZONTAL SAMPLING
 - MULTIBANDFILTER RADIOMETER (NILU-UV))
 - ADDITIONAL SNOW/ICE CHARACTERISTICS OBERVATIONS?
 - HROARSLÆKUR GAUGING STATION
- ‘MODEL WATERSHED’ (SNOW WATER DISCHARGE)
- HVERAGERÐI BANANAHÚSIÐ - GREENHOUSE

>> OPTION IS TO ORGANISE THE MEETING IN GUNNARSHOLT, 1.5 HOUR FROM REYKJAVIK

>> CAN STUDENTS JOIN US?





WORKSHOP + **WG MEETINGS** = 1 DAY OR 1.5 DAY?

- WG MEETINGS START TOGETHER:
- FIELD TRIP DATA INTERPRETATION /ALBEDO VS. CONCENTRATION, SNOW MICROPHYSICS, DENSITY, SWE IF INTERESTED
- FIELD DATA COMPARISON WITH THE IMO SNOW MODEL
- COMPARISON OF SNOW-MELT MODELS
- DISCUSSION OF THE IMPLEMENTATION OF THE FIELD DATA INTO THESE MODELS

WORKSHOP + WG MEETINGS = 1 DAY OR 0.5 DAY?

- THE IMO SNOW MODELS
- THE AVALANCHE CENTER
- LIGHT ABSORBING IMPURITIES ON SNOW
 - DUST, VOLCANIC ASH, BC, OC
 - CASE STUDY IN ICELAND, EXPERIMENTS IN FINLAND, ARCTIC IMPLICATIONS
- LONG TERM CHANGES IN SEA-ICE EXTENT AND GLACIERS (ICELAND)
- SNOW AND HYDROLOGICAL RESEARCH AT THE RU UNIVERSITY – DAVID

>> SHALL WE HAVE IT OPENED FOR PUBLIC?

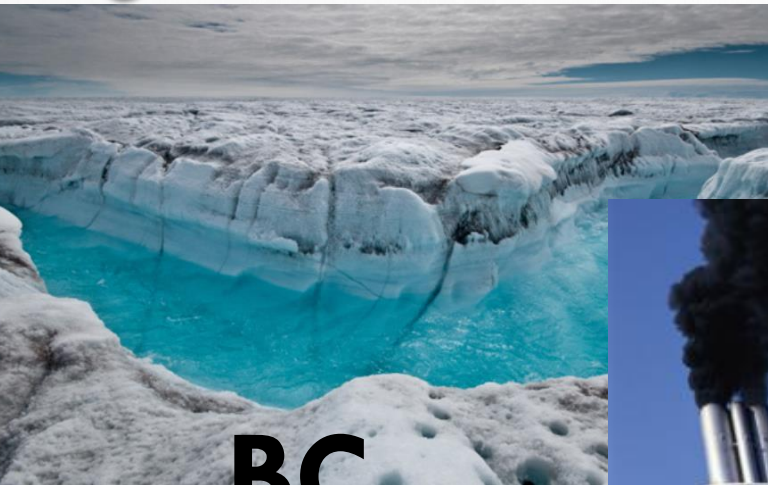
VENUE AT THE AGRICULTURAL UNIVERSITY OF ICELAND IN KELDNAHOLT

- BUS 15 TAKES 20 MIN FROM THE CENTER
- SPACE FOR 40-50 PEOPLE MAX
- LUNCH – 10–12 EUR
- KEFLAVIK FLY BUS 50 MIN TO REYKJAVIK
- SHUTTLES TO HOTEL
- HOTEL PRICE!!

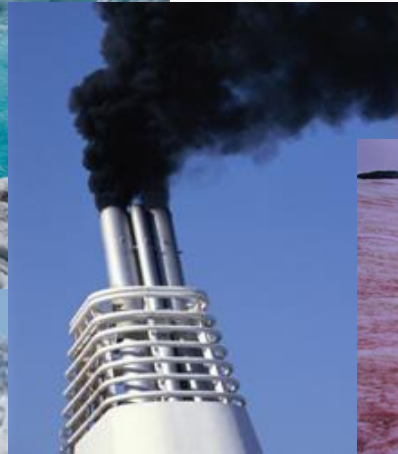


FIELD TRIP – WG1,2 MEETING

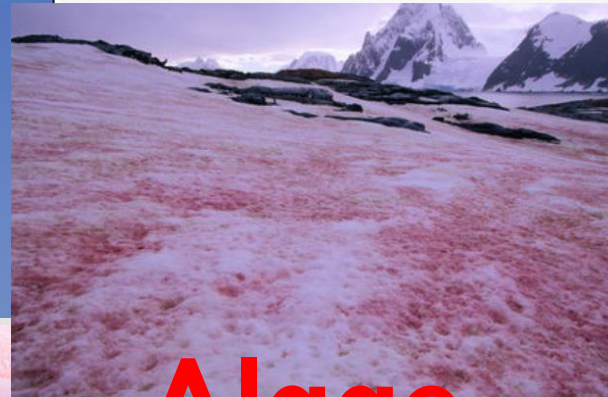
IMPURITIES ON SNOW



BC



Dust



Algae



VOLCANIC DUST ON SNOW IN ICELAND



Contents lists available at [ScienceDirect](https://www.sciencedirect.com)

Aeolian Research

journal homepage: www.elsevier.com/locate/aeolia



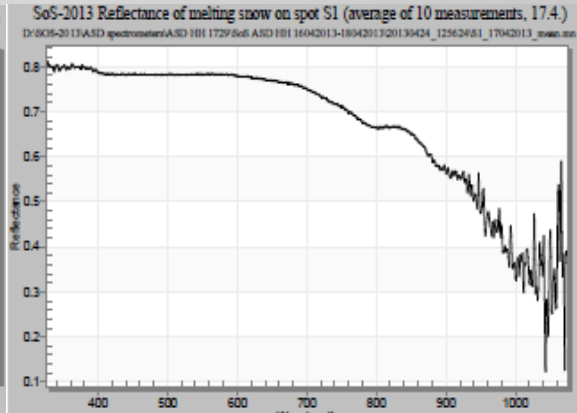
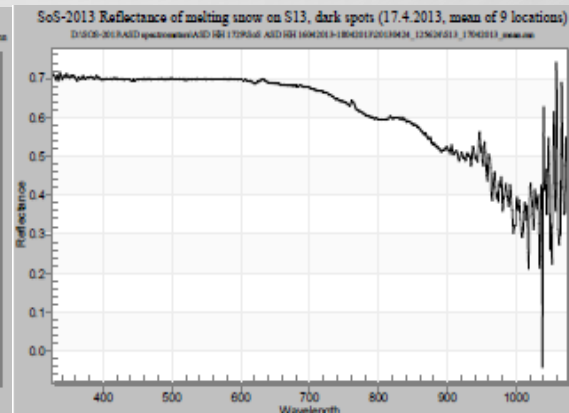
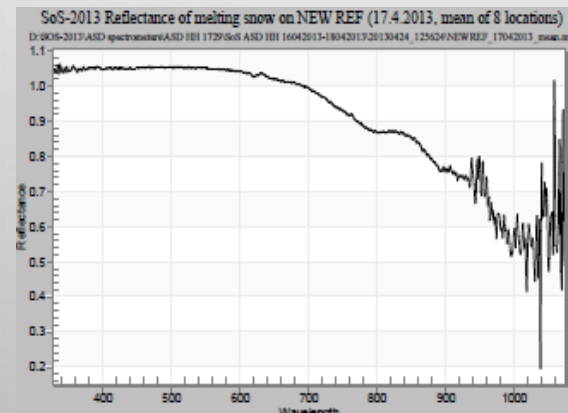
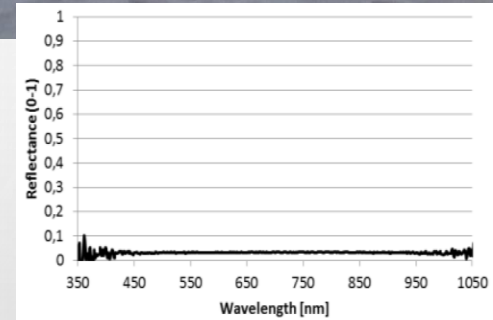
Snow-Dust Storm: Unique case study from Iceland, March 6–7, 2013

Pavla Dagsson-Waldhauserova^{a,b,g,*}, Olafur Arnalds^a, Haraldur Olafsson^{b,c,d}, Jindrich Hladil^e, Roman Skala^e, Tomas Navratil^e, Leona Chadimova^e, Outi Meinander^f

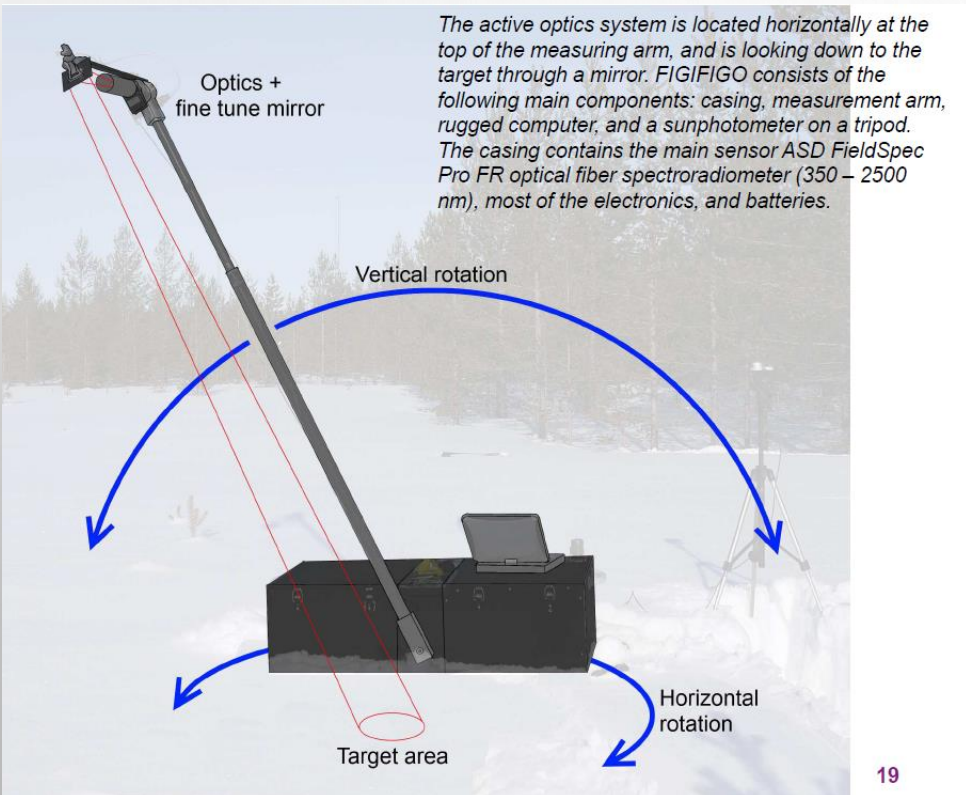


FIELD TRIP = WG1,2

- **IMPURITIES ON SNOW/ICE**
- BC AND DUST POLLUTED SNOW HORIZONTAL SAMPLING
- MULTIBANDFILTER RADIOMETER (NILU-UV))
- WAVELENGTH-DEPENDENT REFLECTED IRRADIANCE
- UV IN 5 CHANNELS (305, 312, 320, 340, 380nm), AND PHOTOSYNTHETICALLY ACTIVE RADIATION (PAR, 400–700nm)
- **ADDITIONAL SNOW/ICE CHARACTERISTICS OBERVATIONS?**



THE FINNISH GEODETIC INSTITUTE FIELD GONIOSPECTROMETER FIGIFIGO



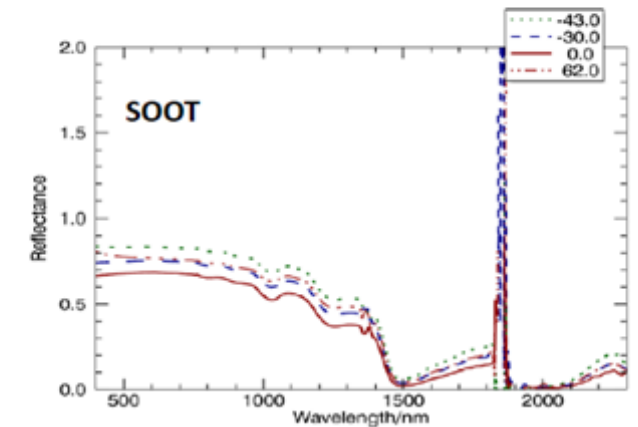
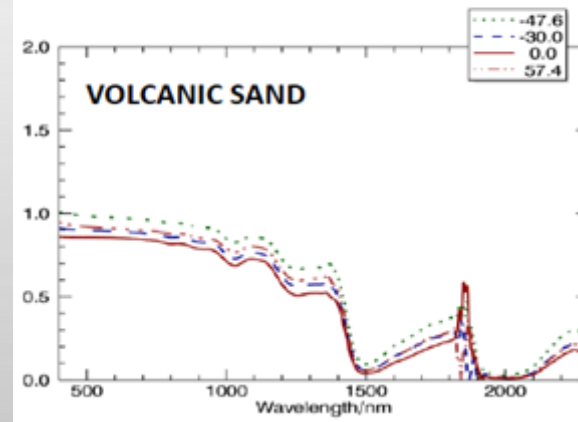
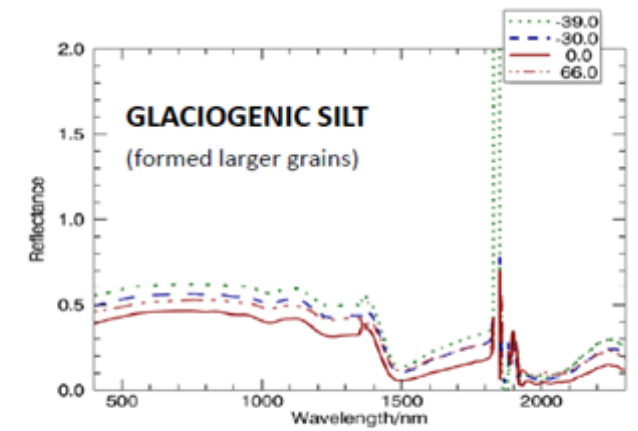
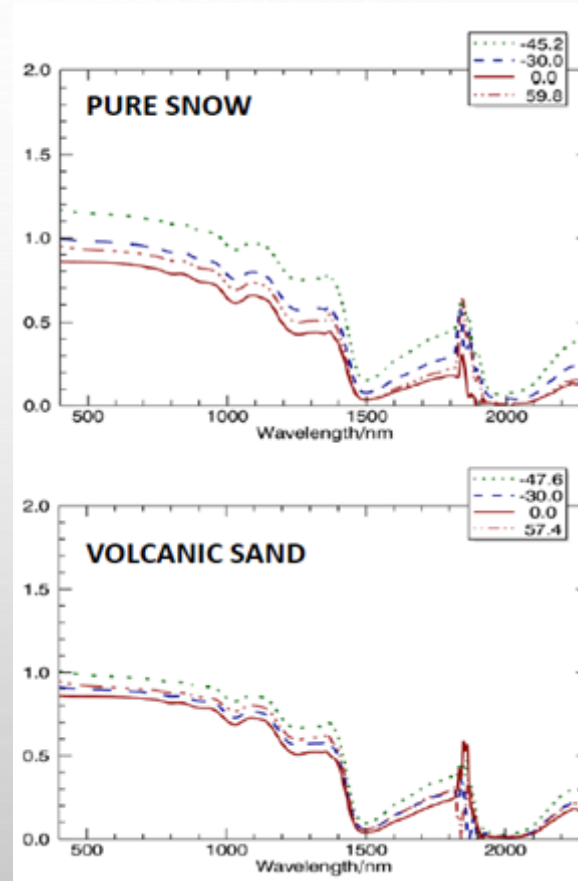
- THIS INSTRUMENT USES MULTIANGULAR REFLECTANCE TO MEASURE THE ALBEDO AND POLARIZATION, HEMISPHERICAL DIRECTIONAL REFLECTANCE FACTOR (HDRF), AND OTHER SNOW PROPERTIES



SPECTRAL REFLECTANCE AT THE TIME OF THE DEPOSITION



Reflectance



Wavelength

